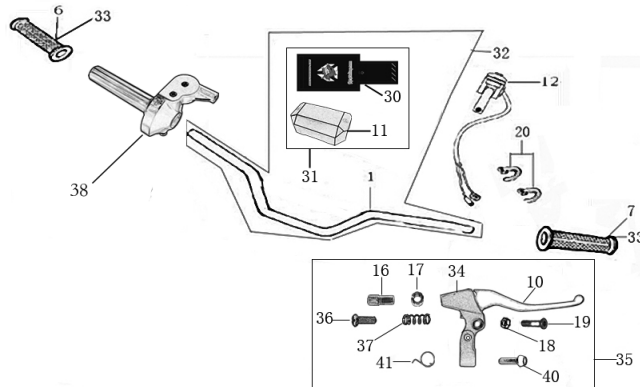




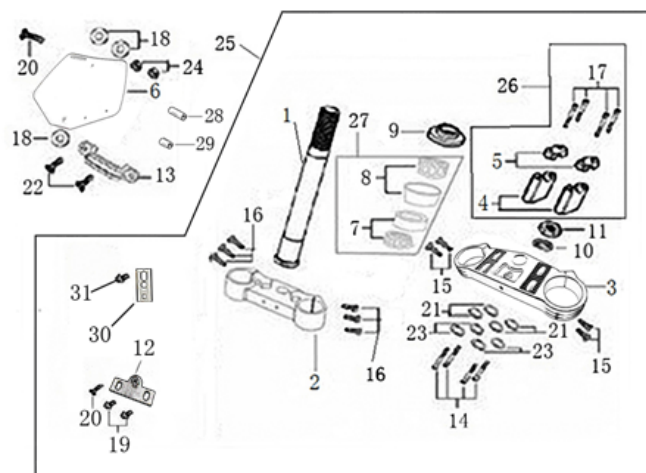
Handle bar assembly



N°	Ref.	Description	Français	Qty/ Bike	MODEL
1	YC50-0101-01	Handle Bar YCF50 Chromelly L=570mm STEEL	Guidon YCF50 chromolly L=570mm	1	50A12-15/50E16
6	YC110-01-01-GY	YCF Right Grip GREY	poignée caoutchouc droite YCF GRISE	1	ALL BIKES2012-2016
7	YC110-01-02-GY	YCF Left Grip GREY	poignée caoutchouc gauche YCF GRISE	1	ALL BIKES2012-2016
10	YC50-0502-02	YCF50 Rear Brake lever (left side) L=128MM	Levier frein arriere (levier gauche) YCF50 L=128MM	1	50A12-16/50E16
41	YC50-1206	Spring for rear brake bracket M14×17	Ressort pour frein arriere M14×17	1	50A12-16/50E16
11	YC50-0110-01	Bar pad for Handlebar YCF50 126×75×45mm	Mousse guidon pour Guidon YCF50 126×75×45mm	1	50A12-16/50E16
12	YC110-0105-03	YCF50 Kill Switch ON/OFF L=500MM	Coupe circuit on off YCF50 L=500MM	1	50A11-16/50E16
16	YC50-0116	Adjust bolt M10×15mm	vis cocotte frein M10×15mm	1	50A12-16/50E16
17	YC50-0117	YCF50 Tight Nut M10	Ecrou cocotte frein YCF50 M10	1	50A12-16/50E16
18	FB02-M5×18	YCF50 Stepped bolt M5X18	Vis YCF50 M5X18	1	50A12-16/50E16
19	GB6189-M5	Self-lock Nut M5	ecrou M5	1	50A12-16/50E16
20	YC110-01-03-BK	Tape 150mm BLACK	colier maintien cable 150mm NOIR	2	ALL BIKES

20	YC110-01-03-WH	Tape 150mm WHITE	colier maintien cable 150mm BLANC	2	ALL BIKES
20	YC110-01-05-BK	Tape 350mm BLACK	colier maintien cable 350mm NOIR	5	ALL BIKES
20	YC110-01-05-WH	Tape 350mm WHITE	colier maintien cable 350mm BLANC	1	AFTER MARKET
30	YC50-0120-01-BK	PVC for Bar Pad YCF50 89×243mm 2013 BLACK	PVC mousse guidon YCF50 89×243mm 2013 NOIR	1	50A12-16/50E16
31	YC50-0129BK	Complete Bar Pad for Handlebar without Bar L=126mm YCF50 2013 BLACK	Mousse guidon complete pour guidon Aluminium sans Barre YCF50 2013 L=126mm NOIR	1	50A12-16/50E16
32	YC50-0130	Handle Bar Chromelly (with bar pad and pvc) YCF50 2013	Guidon Chromolly complet avec mousse et pvc YCF50 2013	1	50A12-16/50E16
33	PPC010-GY	YCF set of grip GREY	Paire de poignée caoutchouc YCF GRISE	1	ALL BIKES2012-2016
34	YC50-0502-01	YCF50 Rear (left side) brake bracket YCF50	Cocotte frein arriere YCF50 (cote gauche)	1	50A12-16/50E16
35	YC50-01031	YCF50 Complete rear brake assy	Levier frein arriere complet YCF50 avec cocotte	1	50A12-16/50E16
40	GB70.2-M6×16	Screw M6×16	Vis M6×16	1	50A12-16/50E16
36	GB818-M4×15	Screw M4×15	Vis M4×15	1	50A12-16/50E16
37	YC50-0136	Spring M4x15 to adjust rear brake lever	Ressort M4x15 pour reglage frein arriere	1	50A12-16/50E16
38	YC50-0138-01	Throttle Assy L=470mm	Poigne Acceleration YCF50E avec temoin batterie	1	50E16/

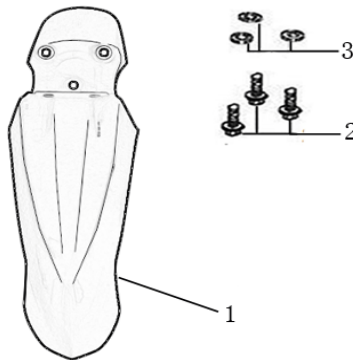
Steering stem assembly



N	Ref.	Description	Français	Qty/ Bike	MODEL
1	YC50-0200-01	Steering stem 195 mm	tige colonne direction 195 mm	1	50A12-16/50E16
2	YC50-0202-05-GY	Lower triple clamp YCF50 135mm 2014 GREY	té fourche inférieur YCF50 135mm GRIS	1	50A141-16//50E16
3	YC50-0201-05-GY	Top Triple Clamp YCF50 135mm 2014 GREY	té fourche supérieur YCF50 135 mm GRIS	1	50A141-16//50E16
4	YC50-0203-04	YCF50 Lower Bar Mount CNC 35 mm BLACK	Pontet guidon inférieur YCF50 35mm NOIR	2	50A12-16/50E16
5	YC110-0202-04	Top Bar Mout CNC Φ 22.2 mm/height 18mm START Type BLACK	pontet guidon supérieur Φ 22.2 mm Type START NOIR	2	ALL BIKES2013-15/ALL BIKES2016(BUTSP3)
6	YC50-0212-02-BK	YCF Front Number Plate 50cc BLACK	plaque avant NOIR YCF 50cc	1	50E16/
7	297-41/24	Lower Taper roller bearing 41/24	roulement inférieur 41/24	1	50A12- 16/50E16/F88s13- 16/F88se1516
8	297-41/22.5	Top Taper roller bearing 41/22.5 R START 08	roulement supérieur 41/22.5	1	50A12- 16/50E16/F88s13- 16/F88se1516
9	YC110-02-09	Top nut for steering ϕ 52	écrou crantellé colonne direction ϕ 52	1	ALL BIKES2012-2016
10	YC110-02-10	Washer for steering stem nut Φ 22.5 \times Φ 36 \times 0.7	joint colonne direction Φ 22.5 \times Φ 36 \times 0.7	3	ALL BIKES2012-2016
11	YC110-02-11	Nut for steering stem M22	écrou supérieur colnne direction M22	1	ALL BIKES2012-2016
12	YC110-0213-02	Number plate bracket short L=60mm H=33mm	support plaque avant courte L=60mm H=33mm	1	50A12- 16/50E16/8810-12
13	YC110-02-14-WH	Break Line Retainer White	guide durite sur plaque avant Blanc	1	ALL BIKES2012- 2013/50A14- 16/50E16/F88s14- 16/F88se1516/P88s1415
14	GB70-M8 \times 20	Stud screw M8X20	vis M8X20	4	50A12-16/50E16
15	GB70-M8 \times 20	Stud screw M8X20	vis M8X20	2	50A12-16/50E16
16	GB70-M8 \times 25	Stud screw M8X25	vis M8X25	2	50A12-16/50E16
17	GB70-M8 \times 20	Stud screw M8X20	vis M8X20	4	50A12-16/50E16
18	GB97- Φ 6-W	flat washer ϕ 6	rondelle ϕ 6	1	ALL BIKES2012-16
19	GB5787-M6 \times 16-W	Hex. Bolt with Flanged Face M6X16	vis M6X16	2	ALL BIKES2012-2016
20	GB9074.5-M6 \times 16-W	Plus screw M6X16 (for bottom front No plate)	vis m6x16 bas plaque No avant	1	50A14-16/50E16/F88s14- 16/F88se1516/P88s1415
20	GB9074.5-M6 \times 25-W	Plus screw M6X25 (for top front No plate)	vis m6x25 haute plaque No avant	1	50A14-16/50E16/F88s14- 16/F88se1516/P88s1415

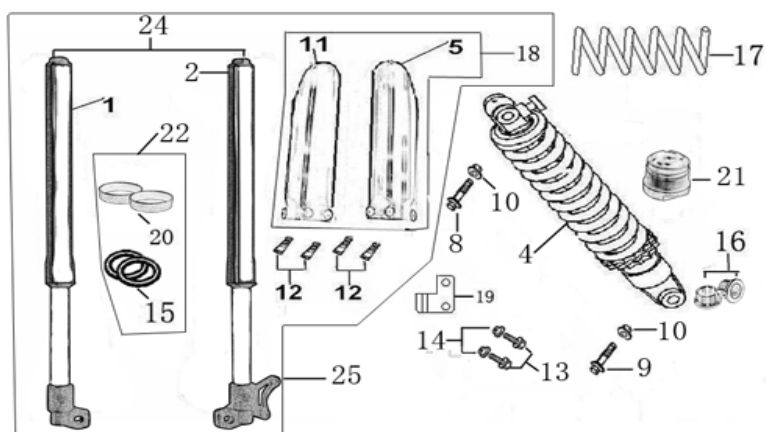
21	GB97-Φ4-W	flat washer φ4	rondelle φ4	1	ALL BIKES2012-16
22	GB818-M4×10-W	Plus screw M4×10	vis M4×10	1	ALL BIKES2012-16
23	GB93-Φ8-W	Spring washer Φ8mm	rondelle Φ8mm	4	ALL BIKES2012-16
24	GB6170-M4-W	Nut M4	ecrou M4	2	50A14-16/50E16/F88s14-16/F88se1516/F88s14-15
25	YC50-0227-02-GY	Complete Triple Clamp YCF50 135mm 2014 GREY	Te Fourche Complet YCF50 135mm 2014 GRIS	1	50A14-16/50E16
26	YC50-0228	YCF50 Set of Bar mount not adjustable φ22.2 mm/bottom 35mm(with GB70-M8×20 8EA+GB93-Φ8-W 4EA)	Jeu pontet guidon YCF50 non ajustable φ 22.2 mm / pontet bas 35mm	1	50A14-16/50E16
27	KRDIRECTION41-2	set of bearing for steering 41/24、 41/22.5	kit rlt colonne direction 41/24、 41/22.5	1	50A12-16/50E16/F88s13-16/F88se16
28	FB13-9×10×17-W	Front Number plate spacer (Top) φ 8.5×10×17	entretoise Plaque numero avant (Haut) φ 8.5×10×17	1	ALL BIKES2013/50A14-16/50E16/F88s14-16/F88se1516/F88s1415
29	FB13-9×10×6-W	Front Number plate spacer (Bottom) φ 8.5×10×5.5	entretoise Plaque numero avant (Bas) φ 8.5×10×5.5	1	50A12-16/50E16/F88s12-16/F88se1516
30	YC110-0213-04	Number plate bracket long TOP BLACK	support plaque avant NOIR	1	50A13-16/50E16/F88s13-16/F88se1516
31	GB5787-M6×10-W	Hex. Bolt M6X10	vis M6×10	1	50A12-16/50E16/F88s13-16/F88se16

Front Fender



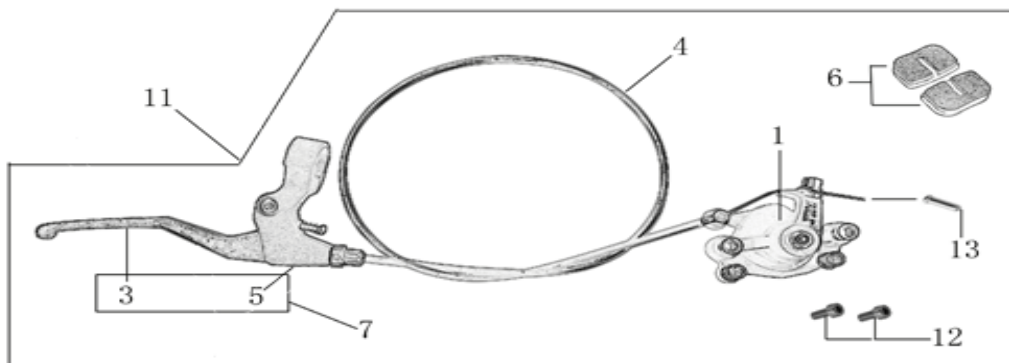
N	Ref.	Description	Français	Qty/ Bike	MODEL
1	YC50-031BK	Front Fender YCF50 BLACK	Gb avant YCF50 NOIR	1	50E16/
2	GB5787-M6×20-W	Hex. Bolt with flanged M6X20	vis M6X20	3	ALL BIKES
	GB96-Φ6-W	Washer φ6×φ18mm	Rondelle φ6×φ18mm	3	ALL BIKES
3	YC110-03-01	Rubber washer Φ6×Φ18×4mm	caoutchouc Φ6×Φ18×4mm	3	ALL BIKES

Front & Rear absorber



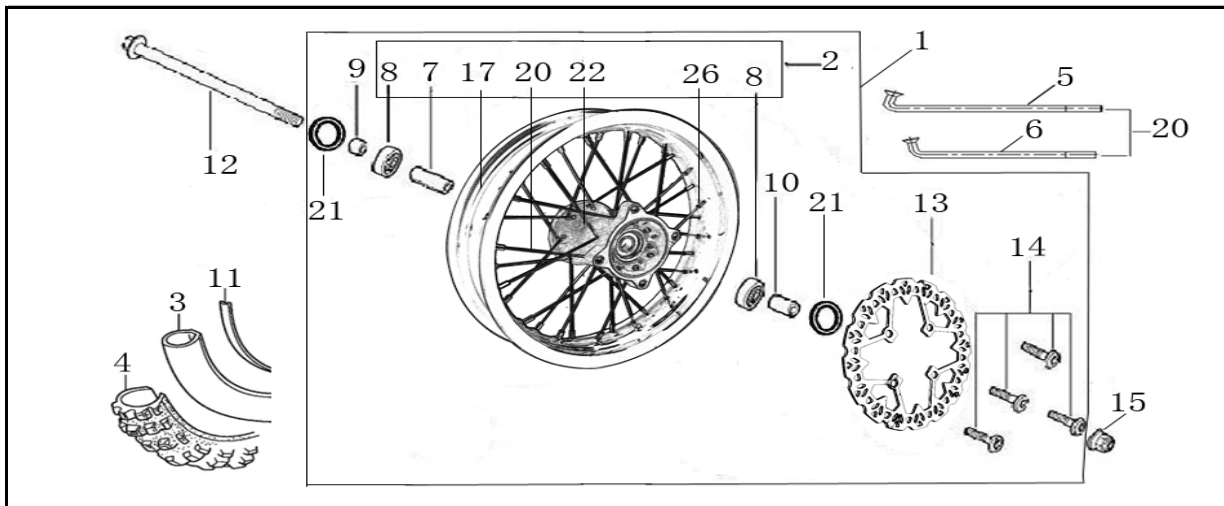
N	Ref.	Description	Français	Qty/ Bike	MODEL
1	YC50-0401-04	Front right fork 530 mm (not adjustable) MAGNESIUM	tube fourche droit 530 mm MAGNESIUM	1	50A13-16/50E16
2	YC50-0402-04	Front left fork 530mm (not adjustable) MAGNESIUM	tube fourche gauche 530 mm MAGNESIUM	1	50A13-16/50E16
4	YC50-0404-03	YCF50 Shock absorber L=200mm 2014 YELLOW	Amortisseur YCF50 L=200mm 2014 JAUNE	1	50A14-16/50E16
5	YC50-04-01-WH	Left front fork protection YCF50 L=530mm WHITE	Protection fourche gauche YCF50 L=530mm BLANC	1	50A12-16/50E16
	YC50-0421-WH	YCF50 Brake Cable clip WHITE	Capot passe durite frein avant YCF50 BLANC	1	50A12-16/50E16
	GB70-M4x15	Hex. Bolt M4x15	vis M4x15	2	50A12-16/50E16
	GB6170-M4	Nut M4	ecrou M4	2	50A12-16/50E16
8	GB5787-M10x45	Hex.bolt for shock absorber M10x45	Vis amortisseur M10x45	1	50A12-16/50E16
9	GB5787-M10x45	Hex.bolt for shock absorber M10x45	Vis amortisseur M10x45	1	50A12-16/50E16
10	GB6187-M10-W	Self-locking Nut M10	Ecrou vis amortisseur M10	2	50A12-16/50E16
11	YC50-04-02-WH	Right front fork protection YCF50 L=530mm WHITE	Protection fourche droite YCF50 L=530mm BLANC	1	50A12-16/50E16
12	GB70.2-M5x12	Plus screw M5X12	vis M5X12	4	50A12-16/50E16
16	YC50-0410-02	shock top spacer 50CC 2014 Φ10×Φ22×21.5mm	Silent Block haut amortisseur 50CC 2014 Φ10×Φ22×21.5mm	1	50A14-16/50E16
16	YC50-0411-03	shock bottom spacer 50CC 2014 Φ10×Φ20×Φ26×11mm	Silent Block bas amortisseur YCF50 Φ10×Φ20×Φ26×11mm	2	50A14-16/50E16
18	YC50-0418WH	YCF50 set of fork protection WHITE	Jeu protection fourche YCF50 BLANC	1	50A12-16/50E16
24	YC50-0400-03	YCF50 Pair of fork 530mm φ35 (not adjustable) MAGNESIUM	Jeu de fourche YCF50 530mm φ35 MAGNESIUM	1	50A13-16/50E16

Front Brake Assy



N	Ref.	Description	Français	Qty/ Bike	MODEL
1	YC50-0502	YCF50 Front Brake caliper	Etrier frein avant YCF50	1	50A12-16/50E16
3	YC50-0501-02	Front Brake lever (right side) L=143MM	levier frein pour (levier droit) L=143MM	1	50A12-16/50E16
	YC50-0515	Spring for front brake bracket M14×17	Ressort pour frein avant M14×17	1	50A12-16/50E16
4	YC50-0501-03	YCF 50 Front brake cable 730mm. (with YC50-0513 1EA)	cable frein avant YCF50 730mm	1	50A12-16/50E16
5	YC50-0501-01	YCF50 Rear (right side) brake bracket 2012	Cocotte frein arriere YCF50 (cote droit) 2012	1	50A12-16/50E16
6	YC50-0506	YCF50 Front / Rear Brake pads	Jeu plaquette avant / arriere YCF50	2	50A12-16/50E16
	YC50-0501	YCF50 Complete front brake assy	Levier frein avant complet avec cocotte YCF50	1	50A12-16/50E16
11	YC50-0511	YCF50 front brake assy L=730mm	kit frein avant YCF50 L=730mm	1	50A12-16/50E16
	YC50-0513	Brake cable caps 50CC	Embout Cables frein 50CC	1	50A14-16/50E16
12	GB70-M6×25	Stud screw M6x25	vis M6x25	2	50A12-16/50E16

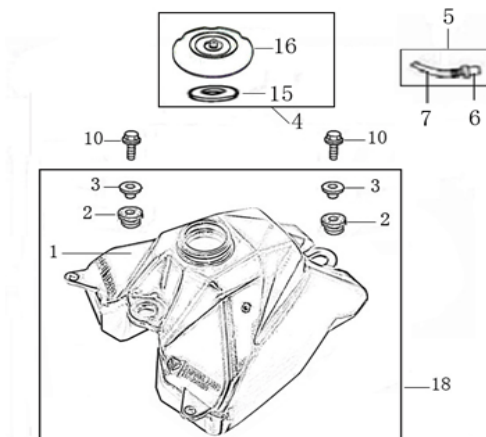
Front Wheel Assy



N	Ref.	Description	Français	Qty/ Bike	MODEL
1	YC50-0601-04	YCF50 Front wheel complete STEEL10",with brake& hardware. Casting hub . But without tire	roue avant complète 10' YCF50 moyeux injectée cerceau acier avec disque sans pneu ni chambre ni fond jante	1	50A16/50E16
2	YC50-0602-01	STEEL front wheel 10' without disk	roue avant ACIER sans disque 10'	1	50A12-16/50E16
3	CHAMBRE10-2.5	Tube for front tire 2.50-10' GL	chambre air 2.50-10' GL	1	50A12-16/50E16/F88s13-16/F88se1516
	FB6170-M8-Cr	Tire valve nut M8	Ecrou M8	1	ALL BIKES
4	250/10	Tire 2.50-10' GUANGLI	pneu 250-10' GUANGLI	1	50A12-16/50E16/F88s13-16/F88se1516
5	YC50-0605	outer spoke for 10wheel, 106 mm	Rayon extérieur 106 mm pour roue AV 10'	16	50A12-16/50E16
6	YC50-0622	inside spoke for 10wheel, 104mm	Rayon interieur 104 mm pour roue AV 10'	16	50A12-16/50E16
8	6201RS	YCF50 Ball bearing 6201RS $\Phi 32 \times \Phi 12 \times 10$ mm	Roulement roue 6201RS $\Phi 32 \times \Phi 12 \times 10$ mm YCF50	2	50A12-16/50E16
9	YC50-06-052	YCF50 Right wheel spacer $\Phi 12 \times \Phi 22 \times 23$	entretoise roue avant droite $\Phi 12 \times \Phi 22 \times 23$ YCF50	1	50A12-16/50E16
10	YC50-06-051	Left wheel spacer $\Phi 12 \times \Phi 22 \times 26$	entretoise roue avant gauche $\Phi 12 \times \Phi 22 \times 26$	1	50A12-16/50E16
11	YC110-11-02	Tire lining for 10'	fond jante av 10'	1	50A12-16/50E16/F88s12-16/F88se1516
12	YC50-06-01	YCF50 Front Axle 170 mm with Self-locking nut $\Phi 12$	Axe de roue avant $\Phi 12$ L=170MM YCF50	1	50A12-16/50E16

13	YC50-0513-01	Front disk ϕ 160 mm 2016	disque frein avant ϕ 160mm 2016	1	50A16/50E16
14	GB70.2-M6 \times 16	Socket head cap screw M6X16	vis disque frein M6X16	4	50A12-16/50E16
15	GB6187-M12 \times P-W	Self-locking nut M12	écrou roue avant M12	1	50A12-16/50E16
17	YC50-0617-01	STEEL Rim for Front wheel 1.4 \times 10'	cerceau roue av 1,4x10' ACIER	1	50A12-16/50E16/F88s12-16/F88se1516
20	JR10-10.6	set of spoke 10' 50cc 2012 (104mm \times 8+106mm \times 16+111mm \times 8)	JEUX RAYON AV 10' 50cc 2012 (104mm \times 8+106mm \times 16+111mm \times 8)	1	50A12-16/50E16
21	YC50-0610	OIL SEAL Φ 22 \times Φ 32 \times 5	joint spy roue Φ 22 \times Φ 32 \times 5	2	50A13-16/50E16
22	YC50-0622-02	YCF50 Front hub injected with washer	Moyeux avant injectée avec joint spy YCF50	1	50A12-16/50E16

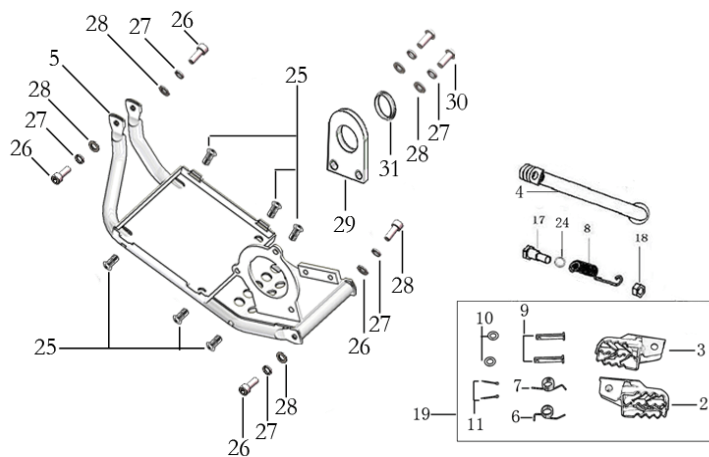
Fuel Tank



N	Ref.	Description	Français	Qty/ Bike	MODEL
1	YC50-07012	YCF50 Fuel tank	Reservoir YCF 50cc	1	50A13-16/50E16
2	YC110-07-01	Cushion for fuel tank	caoutchouc pour reservoir	2	ALL BIKES2011-16
3	YC110-07-02	Washer for fuel tank Φ 12 \times Φ 30 \times 11mm	entretoise pour reservoir Φ 12 \times Φ 30 \times 11mm	2	ALL BIKES2011-16
5	YC125-0704-BK	Fuel tank valve BLACK	Valve prise air NOIR	1	ALL BIKES
6	YC110-0704-BK	Cap of Fuel tank valve BLACK	Capuchon Valve prise air NOIR	1	ALL BIKES
7	YC110-0705-BK	Fuel tank valve Hose L=40mm BLACK	Durite caoutchouc Vale prise air L=40mm NOIRE	1	ALL BIKES

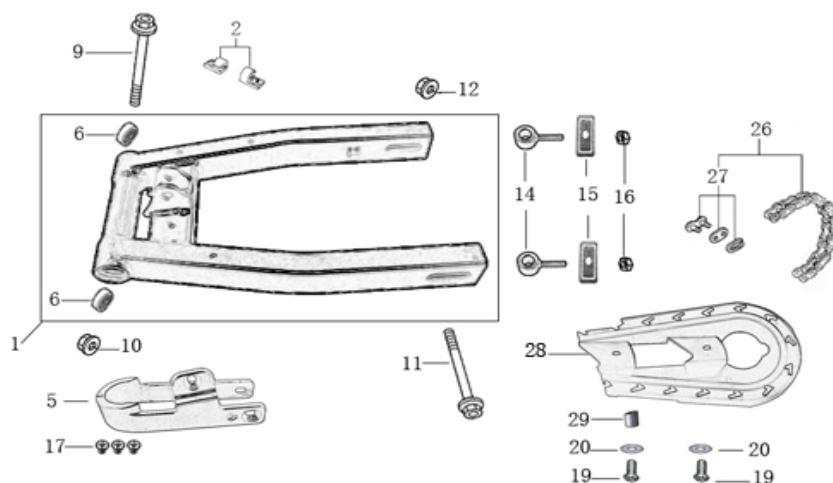
10	GB5787-M8×25-B	Hex. Bolt with flanged M8X25 BLACK	vis M8X25 NOIR	2	50A13-16/50E16/F88s13-16/F88se1516/F12513-16/F125s13-16/F125se1516/SM125s13-16
15	YC110-0720-02	Rubber mat for tank cap plastic Φ14×Φ52×2mm Oil proof	Caoutchouc bouchon reservoir YCF Φ14×Φ52×2mm	1	ALL BIKES2013-16
16	YC110-0702-01	YCF Tank cap plastic 2013	Bouchon reservoir plastique YCF 2013	1	ALL BIKES2013-16
18	YC50-0718	YCF50 Complete fuel tank 2013 (with YC110-0701 2EA+YC110-07-02 2EA)	Reservoir complet YCF50 2013	1	50A13-16/50E16

Foot Peg assy



N	Ref.	Description	Français	Qty/ Bike	MODEL
2	YC50-0902	YCF50 right foot pegs steel L=65mm GREY	Repose pied droit acier YCF50 L=65mm GRIS	1	50A12-16/50E16
3	YC50-0901	YCF50 left foot pegs steel L=65mm GREY	Repose pied gauche acier YCF50 L=65mm GRIS	1	50A12-16/50E16
4	YC50-190	Kick stand 190mm	bequille 190mm	1	50A12-16/50E16
5	YC50-204-02	Motor skid plate 50E 2016	Sabot moteur - Batterie YCF50E Aluminium	1	50E16/
25	GB6100-M6-CW	nut M6×25mm	Vis M6×25mm	6	50E16/
26	GB70-M8×20	Hex. Bolt with flanger M8×20	vis boucle arriere M8×20	4	50E16/
27	GB93-Φ8-W	Standard spring washer φ8	rondelle φ8	4	50E16/
28	GB97-Φ8-W	flat washer φ8	rondelle φ8	4	50E16/
29	YC50-1632-01	Fixed Motor right 50E 2016	Fixation Moteur cote droit	1	50E16/

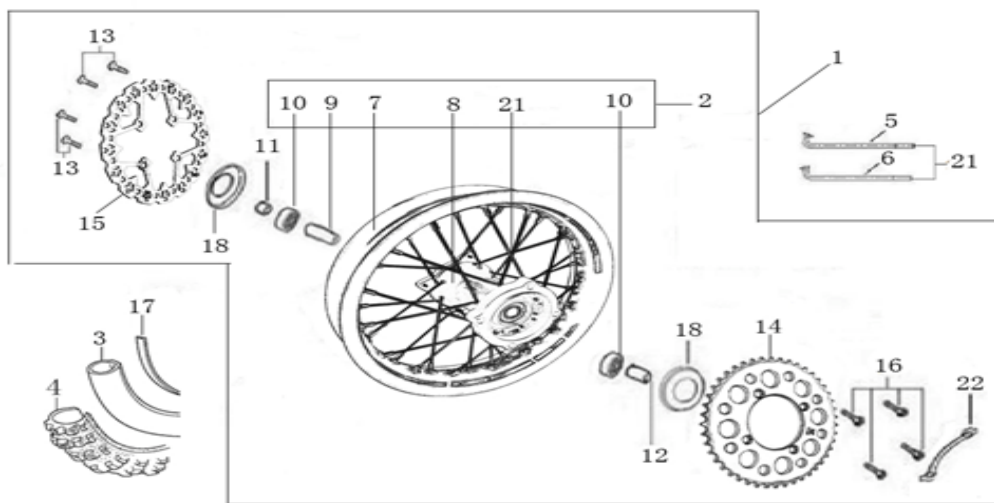
30	GB70.2-M8×20	screw M8x20	vis M8x20	2	50E16/
27	GB93-Φ8-W	Standard spring washer φ8	rondelle φ8	2	50E16/
28	GB97-Φ8-W	flat washer φ8	rondelle φ8	2	50E16/
31	YC50-1633-01	Cushion for Motor right	Entretoise Maintient moteur Droit	1	50E16/
6	YC110-09-01	Spring for right steel foot peg Φ1.5×Φ16.5×10mm	ressort repose pied droit acier Φ1.5×Φ16.5×10mm	1	ALL BIKES2013-2016(BUTSP1/SP2/SP3)
7	YC110-09-02	Spring for left steel foot peg Φ1.5×Φ16.5×10mm	ressort repose pied gauche acier Φ1.5×Φ16.5×10mm	1	ALL BIKES2013-2016(BUTSP1/SP2/SP3)
8	YC110-19-01	spring for kick stand Φ2.5×Φ15×105	ressort bequille Φ2.5×Φ15×105	1	ALL BIKES2014-16(BUTSP1/SP2/SP3)
9	GB882-Φ8×43-W	shaft pin for steel footpegs φ8×43	axe repose pied acier φ8×43	2	ALL BIKES2014-16(BUTSP1/SP2/SP3)
10	GB97-Φ8-W	flat washer φ8×16×1	rondelle φ8×16×1	2	ALL BIKES2011-16
11	GB91-Φ2×25-W	Cotter pin 2.0×25	goupille 2.0×25	2	ALL BIKES2013-16
17	FB02-M10×1.5×30I	Stepped screw M10X35 for kick stand	vis bequille M10X35	1	ALL BIKES2014-16(BUTSP1/SP2/SP3)
18	GB6170-M10-G	Hex. Nut M10	ecrou bequille M10	1	ALL BIKES2014-16(BUTSP1/SP2/SP3)
19	YC50-0902/03	Steel set of foot pegs 50cc Grey	jeu repose pied acier 50cc Grise	1	50A12-16/50E16
24	GB93-Φ10-W	Standard spring washer φ10	rondelle φ10	1	ALL BIKES2014-16(BUTSP1/SP2/SP3)
Swing Arm assy					



N	Ref.	Description	Français	Qty/ Bike	MODEL
1	YC50-10014	YCF50 Mono swing arm BLACK	bras oscillant mono YCF50 NOIR	1	50A12-16/50E16
2	YC110-10-014-BK	Rear brake clip for BLACK	attache durite frein arriere NOIR	1	ALL BIKES2012-15(BUTSP1/SP2/SP3)/ ALL BIKES2016 (BUTSP2/SP3)
5	YC50-10-01	YCF Chain slider 50cc	patin chaine YCF 50cc	1	50A12-16/50E16
6	6001/28-12-08	Swing arm bearing $\phi 28 \times \phi 12 \times 8 \text{mm}$	roulement bras oscillant $\phi 28 \times \phi 12 \times 8 \text{mm}$	2	ALL BIKES2009-16
9	YC50-1009	Swing arm shaft with self lock nut $\phi 12 \times 190 \text{mm}$	axe bras oscillant $\phi 12 \times 190 \text{mm}$	1	50A12-16/50E16
10	GB6187-M12-W	Self locking nut M12	ecrou bras oscillant M12	1	ALL BIKES2012-16
11	YC50-11-02	YCF50 Rear wheel axle M12x215 with Self locking nut M12	axe roue arriere YCF50 L=215mm avec ecrou $\phi 12$	1	50A13-16/50E16
16	YC50-1001-001	YCF50 Block axle	Tendeur chaine YCF50	2	50A12-16/50E16
16	YC50-1001-002	YCF50 Block axle fixing plate	Patte acier fixation tendeur chaine YCF50	2	50A12-16/50E16
	GB6189-M8-W	Clutch Self-lock Nut M8	ecrou M8	2	50A12-16/50E16
17	GB819-M6x16-W	Plus screw M6x16	vis m6x16	5	ALL BIKES2015-16(BUTSP2/SP3)
	GB6100-M6-CW	nut M6x25mm	Vis M6x25mm	5	ALL BIKES2015-16(BUTSP2/SP3)
19	GB818-M6x16-W	Plus screw M6x16	vis M6x16	1	50A12-16/50E16
19	GB818-M6x25-W	Plus screw M6x25	vis M6x25	1	50A12-16/50E16
20	GB97- $\phi 6$	Flat washer $\phi 6$	rondelle $\phi 6$	3	ALL BIKES2012-16

26	RS35-114	Driving chain RS35-114	Chaîne RS35-114 maillons	1	50E16/
27	AR-35	Chain link H=13mm	Attache rapide chaîne H=13mm	1	50E16/
28	YC50-0600-01	YCF50 Chain box protection YCF50	Protection chaîne plastique YCF50	1	50A12-16/50E16
	FB13-6×12×12	bushing Φ6×Φ12×12	entretoise Φ6×Φ12×12	1	50A12-16/50E16

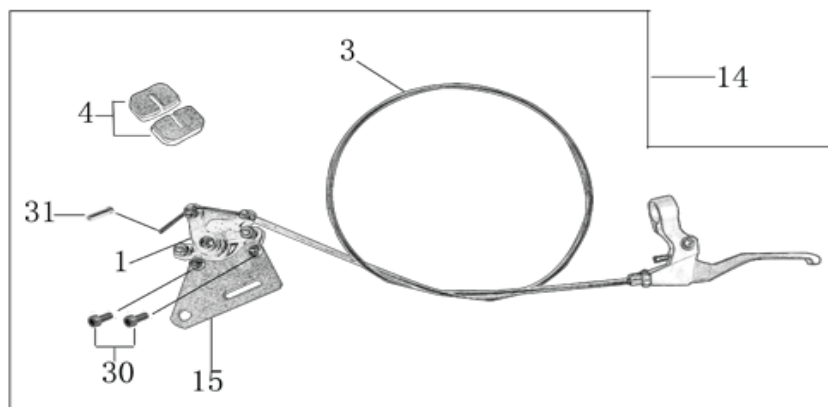
Rear Wheel Assy



N	Ref.	Description	Français	Qty/ Bike	MODEL
1	YC50-1101-04	YCF50 Complete STEEL Rear wheel 1.40-10' Casting hub with disk 2016	roue arriere complète YCF50 Acier 1.40-10' moyeux injecte avec disque	1	50A16/50E16
2	YC50-1102-01	Complete STEEL Rear wheel 1.40x10' without disk	roue arriere complète ACIER 1.40x10' moyeux injecte sans disque	1	50A12-16/50E16
3	CHAMBRE10-2.5	Tube for Rear tire 2.50-10 GL	chambre air 2.50-10' GL	1	50A12- 16/50E16/F88s13- 16/F88se1516
	FB6170-M8-Cr	Tire valve nut M8	Ecrou M8	1	ALL BIKES
4	250/10	YCF tyre 2.50/10' GUANGLI	pneu 2.50/10' YCF GUANGLI	1	50A12-16/50E16
5	YC50-0606	outer spoke for 10' wheel 108 mm	Rayon extérieur 108 mm pour roue AV 10'	16	50A12-16/50E16
6	YC50-0605	inside spoke for 10' wheel 106 mm	Rayon interieur 106 mm pour roue AV 10'	16	50A12-16/50E16

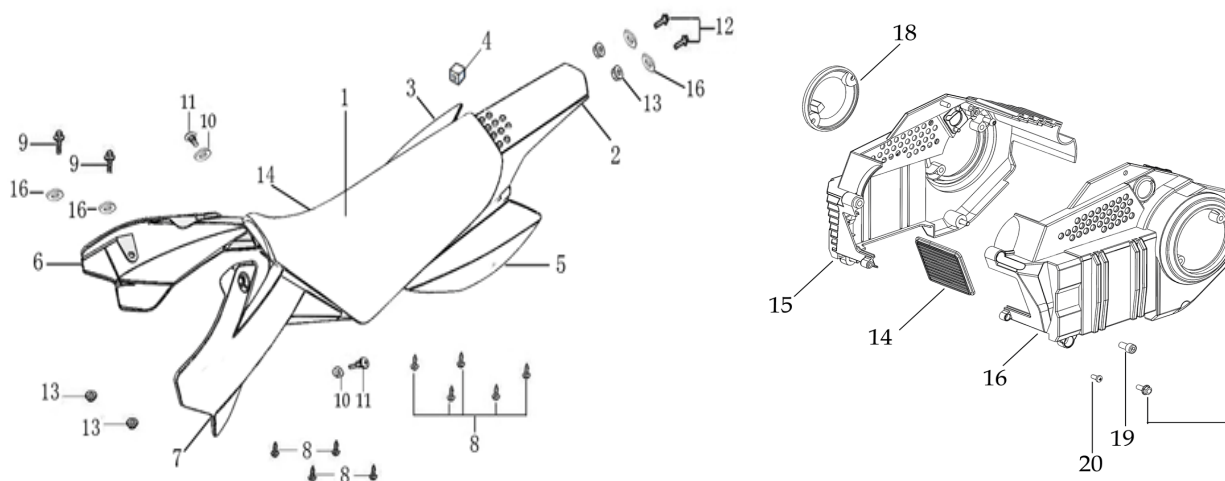
7	YC50-1117-01	STEEL Rim 1.40×10'	cerceau roue 1,40x10 ACIER	1	50A12-16/50E16/F88s12-16/F88se1516/P88s12-15
8	YC50-1122-02	YCF50 Rear wheel hub Casting with seal	Moyeux arrière YCF50 injecte avec joint spy	1	50A12-16/50E16
10	6201RS	Ball bearing 6201RS $\Phi 32 \times \Phi 12 \times 10$ mm	roulement roue 6201RS $\Phi 32 \times \Phi 12 \times 10$ mm	2	50A12-16/50E16
12	YC50-11-041	Axle spacer, $\phi \Phi 22 \times \Phi 12 \times 25$ mm (left/right)	entretoise roue arrière (droit/gauche) $\Phi 22 \times \Phi 12 \times 25$ mm	2	50A14-16/50E16
13	GB70.2-M6×16	Socket head cap screw M6×16	vis de disque M6×16	4	50A12-16/50E16
14	YC110-11-05/60	YCF Driven sprocket RS35 60T	couronne acier RS35 60T	1	50E16/
15	YC50-0513-01	YCF50 disk $\phi 160$ mm 2016	disque YCF50 $\phi 160$ mm 2016	1	50A16/50E16
16	GB5783-M8×20-W	Exterior Hex.Bolt M8X20	vis couronne m8x20	4	50A12-16/50E16
17	YC110-11-02	Tire lining for 10'	fond jante 10'	1	50A12-16/50E16/F88s12-16/F88se1516/P88s12-15
18	YC50-0610	OIL SEAL $\Phi 22 \times \Phi 32 \times 5$	joint spy roue $\Phi 22 \times \Phi 32 \times 5$	2	50A13-16/50E16
21	JR10-10.5	set of spoke 10' (106mm×16+111mm×16)	jeu rayon arrière 10' (106mm×16+111mm×16)	1	50A12-16/50E16/F88s12-16/F88se1516/P88s13-15
22	YC110-11-03	Sprocket Locking piece	block couronne	2	ALL BIKES2013-16 (BUTSP1/SP2/SP3)

REAR BRAKE



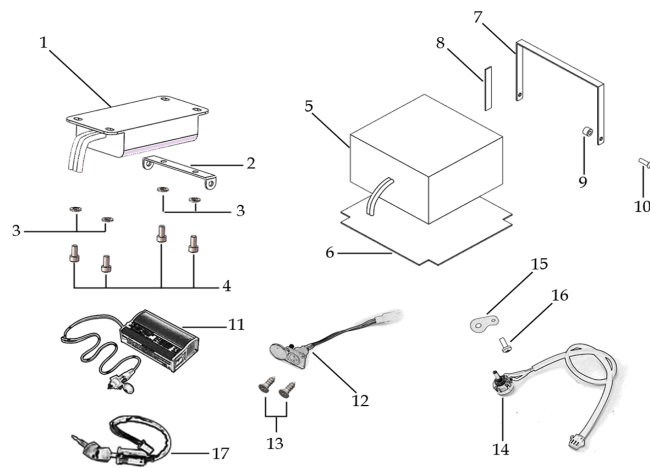
N	Ref.	Description	Français	Qty/ Bike	MODEL
---	------	-------------	----------	--------------	-------

1	YC50-1201	YCF50 Rear Brake caliper	Etrier frein arriere YCF50	1	50A12-16/50E16
3	YC50-0502-03	YCF50 Rear brake steel line 1050mm A+B=120mm (with YC50-0513 1EA)	durite frein arriere YCF50 1050mm A+B=120mm	1	50A12-16/50E16
4	YC50-0506	Front / Rear Brake pads	jeu plaquette avant / arriere	2	50A12-16/50E16
14	YC50-1214	YCF50 Rear brake assy L=1050mm	Kit frein arriere YCF50 L=1050mm	1	50A12-16/50E16
	YC50-0513	Brake cable caps 50CC	Embout Cables frein 50CC	1	50A14-16/50E16
15	YC50-120101-02	Rear brake bracket T=3mm 2014	patte fixation étrier frein arriere T=3mm 2014	1	50A14-16/50E16
	FB13-7×10×4-W	bushing $\Phi 7 \times \Phi 10 \times 4$ mm	entretoise $\Phi 7 \times \Phi 10 \times 4$ mm	2	50A14-16/50E16
30	GB70-M6×12	Hex. Bolt M6x12	vis M6x12	2	50A12-16/50E16
Seat & Plastic kit					



N	Ref.	Description	Français	Qty/ Bike	MODEL
1	YC50-1401-05	YCF50 Seat assy L=405mm 2016	Selle YCF50 2016	1	50A16/50E16
2	YC50-14-012-WH	YCF50 Rear fender WHITE	Garde boue arriere YCF50 BLANC	1	50A1516/50E16
3	YC50-14-022-WH	YCF right side plastic WHITE	Plaque latérale droite YCF BLANCHE	1	50A12-16/50E16
4	YC110-14-03	Cushion for right side plastic	caoutchouc plaque laterale droite	1	ALL BIKES
5	YC50-14-042-WH	YCF50 Left side plastic WHITE	Plaque latérale gauche YCF50 BLANCHE	1	50A12-16/50E16

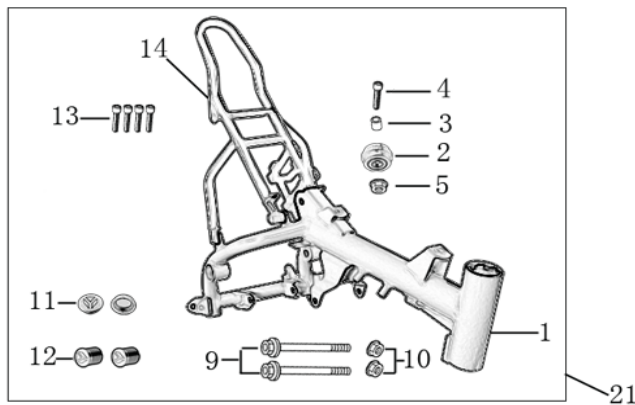
6	YC50-14-05-BK	YCF Right shroud BLACK 50CC	ouie radiateur droite YCF 50CC NOIR	1	50A1516/50E16
7	YC50-14-06-BK	YCF Left side shroud BLACK 50CC	ouie radiateur gauche YCF 50CC NOIR	1	50A1516/50E16
8	GB845-ST4.8x16-G	Screw for plastic kit ST4.8x16	vis plastique ST4.8x16	9	ALL BIKES2012-16
9	GB5787-M6x20-W	hex. Bolt with flanged M6x20	vis M6x20	2	ALL BIKES
10	YC110-02-13	Rubber washer Φ6×Φ14×3mm	joint caoutchouc Φ6×Φ14×3mm	2	ALL BIKES2012-16
11	FB5787-M5x12-W	hex. Bolt with flanged M5x12	vis M5x12	2	ALL BIKES2012-16
11	GB96-Φ5-W	flat washer Φ5×Φ12	rondelle Φ5×Φ12	2	ALL BIKES2015-16
12	GB5787-M6x20-B	hex. Bolt with flanged M6x20 BLACK	vis M6x20 NOIR	2	ALL BIKES2012-16
13	GB6177-M6-W	Hex. Flanged nut M6	écrou M6	2	ALL BIKES2012-16
14	YC50-1425-01	Plastic for Motor Front 50E 2016	Plaque Plastique Caisson avant	1	50E16/
15	YC50-1426-01	Plastic for Motor Right 50E 2016	Caisson Plastique Droit YCF50E Noir	1	50E16/
16	YC50-1427-01	Plastic for Motor Left 50E 2016	Caisson Plastique Gauche YCF50E Noir	1	50E16/
17	YC50-1428-01	Complete Plastic for Motor 50E 2016	Caisson Plastique Complet YCF50E Noir	1	50E16/
19	GB70-M8x16	Hex. Bolt M8x16	vis M8x16	1	50E16/
20	GB818-M5x12-W	Plus screw M5x12	vis M5x12	1	50E16/
21	GB5787-M6x16-W	Plus screw M6x16	vis M6x16	4	50E16/
22	GB70.2-M6x16	Plus screw M6x16	vis M6x16	2	50E16/
18	RCSC-BK	Right crankcase small Cover 88/125 2014 BLACK	DEMI CARTER EMBRAYAGE NOIR 88/125	2	50E16/F88s14-16/F88se1516/F12514-16/F125s14-16/F125se1516/F88s1415/P12514-16/SM125s14-16
23	GB70.2-M6x20	Plus screw M6x20	vis M6x20	4	50E16/
ELECTRIC					



N	Ref.	Description	Français	Qty/ Bike	MODEL
1	YC50-1521-01	Controller XK-033 48V 35A 1200w	Controlleur XK-033 48V 35A 1200w	1	50E16/
2	YC50-1627-01	Support of Motor Plastic	Support Controlleur	1	50E16/
3	GB70-M6×12	Hex. Bolt M6x12	vis M6x12	4	50E16/
4	GB97-Φ6-W	flat washer φ6	rondelle φ6	4	50E16/
5	YC50-1511-01	Lithium battery 10A 48V 166×157×92mm	Batterie Lithium 10A 48V 166×157×92mm	1	50E16/
6	YC50-1523-02	Battery protection 50E	Maintient mousse batterie	1	50E16/
7	YC50-1508-02	Battery fixed 50E	Fixation Batterie	1	50E16/
8	YC50-1534-01	Rubber Battery fixed	Caoutchouc pour maintient batterie	5	50E16/
9	FB13-6×12×9-W	Battery fixed spacer Φ6×Φ12×9	Entretoise Maitient Batterie Φ6×Φ12×9	2	50E16/
10	GB70.2-M6×20	Hex. Bolt M6x20	vis M6x20	2	50E16/
11	YC50-1514-02	Charger 50E 2016	Chargeur Batterie YCF50E 2016	1	50E16/
12	YC50-1513-01	Charge plug 50E 2016	Prise Chargeur YCF50E	1	50E16/
13	GB846-ST2.9×10-W	Screw ST2.9×9.5	Vis ST2.9×9.5	2	50E16/

14	YC50-1544-01	Potentiometer L=170mm	Potentiometre L=170 mm	1	50E16/
15	YC50-1545-01	Locking piece for Speed governor	Piece Acier	1	50E16/
16	GB818-M6×16-W	Plus screw M6X16	Vis M6X16	1	50E16/
17	YC50-0021	Key contactor	Contacteur a cle	1	50A12-16/50E16/F88se1516 /F125se1516

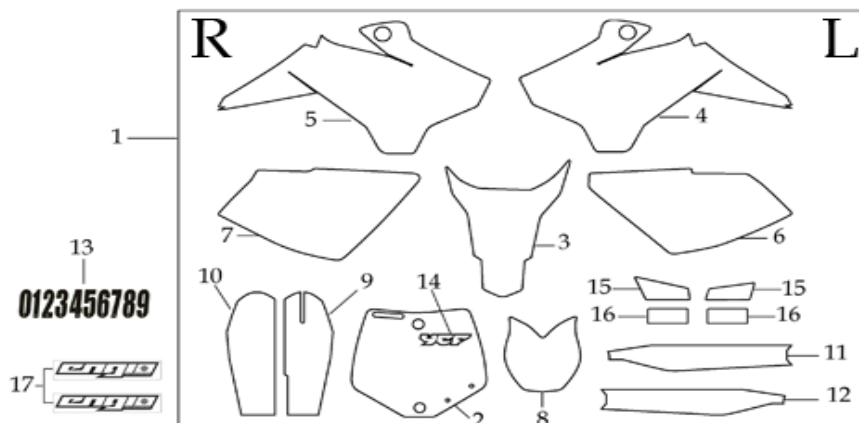
Frame



N	Ref.	Description	Français	Qty/ Bike	MODEL
1	YC50-173-01-WH	Frame 50E 2016 WHITE	Cadre 50E 2016 BLANC	1	50E16
2	YC50-2201	YCF Chain tensioner component	roulette chaine YCF	1	50A12-16/50E16
	YC50-2201-01	bushing $\Phi 10 \times \Phi 14 \times 10$ mm	entretoise $\Phi 10 \times \Phi 14 \times 10$ mm	1	50A12-16/50E16
	GB70-M10×50×1.5W	Hex. Bolt M10x50	Vis M10x50	1	50A12-16/50E16
	GB6187-M10-1.5-W	Self-locking Nut M10	écrou M10	1	50A12-16/50E16
9	GB5787-M8×95-W	Hex. Bolt with flanger M8x95	vis M8x95	2	50A13-16/50E16
10	GB6187-M8-W	Self locking nut M8	ecrou M8	2	ALL BIKES
11	YC50-1210	Rubber cover (swing arm axle)	Capuchon cadre (axe bras)	2	50A12-16/50E16
12	YC50-1211	Rubber cover (bottom of frame) 50CC	Capuchon cadre (dessous cadre) 50CC	2	50A12-16/50E16
13	GB70-M8×16	Hex. Bolt M8X16	vis M8x16	4	50A12-16/50E16
14	YC50-16-03-BK	Rear Sub frame part 50E 2016 Steel Black	Boucle Arriere Acier Noire	1	50E16

21	YC50-1621-02-WH	complète frame 50E 2016 WHITE	cadre complet 50E 2016 BLANC	1	50E16
----	-----------------	-------------------------------	------------------------------	---	-------

GRAPHICS



N	Ref.	Description	Français	Qty/ Bike	MODEL
1	KD50E2016	YCF 50E complete graphic kit 2016	Kit deco complet YCF 50E 2016	1	50E16/
2	YC50-33-010	YCF 50E Front plate graphic 2016	Sticker Plaque avant YCF 50E 2016	1	50A16/50E16
3	YC50-33-021	YCF 50E Rear mudguard graphic 2016	Sticker GB Arriere YCF 50E 2016	1	50E16/
4	YC50-33-031	YCF 50E Left shrouder graphic 2016	Sticker Ouie gauche radiateur YCF 50E 2016	1	50E16/
5	YC50-33-041	YCF 50E Right shrouder graphic 2016	Sticker Ouie droite radiateur YCF 50E 2016	1	50E16/
6	YC50-33-051	YCF 50E Left side plate graphic 2016	Sticker Plaque laterales gauche YCF 50E 2016	1	50E16/
7	YC50-33-061	YCF 50E Right side plate graphic 2016	Sticker Plaque laterales droite YCF 50E 2016	1	50E16/
8	YC50-33-071	YCF 50E front fender Front fender graphic 2016	Sticker GB Avant YCF 50E 2016	1	50E16/
9	YC50-33-081	YCF 50E Front left shock protection graphic 2016	Sticker Protection fourche gauche YCF 50E 2016	1	50E16/
10	YC50-33-091	YCF 50E Front right shock protection graphic 2016	Sticker Protection fourche droit YCF 50E 2016	1	50E16/
	YC110-1901	Sticker Chain	Autocollant Chaîne	1	ALL BIKES2013-16

	YC110-1902	Sticker Tire	Autocollant Pression Pneu	1	ALL BIKES2013-16
	YC110-1903	Sticker Warning OIL Level	Autocollant Attention Niveau Huile	1	ALL BIKES2013-16
	YC110-1904-01	Sticker Rear Mudguard 50E 77×85mm	Autocollant garde boue arriere 50E 77×85mm	1	50E16/
	YC110-1905	Sticker CE	Autocollant CE	1	ALL BIKES2013-16
	YC110-1906	Warning sticker	Sticker Attention	1	ALL BIKES2013-16
	YC110-1907	Warning Sticker Transport	Sticker Caisse Avertissement Transport	1	ALL BIKES2013-16
	YC110-1908	Warning Sticker Shosk Absorber	Sticker Avertissement Amortisseur	1	ALL BIKES2013-16

ENGINES

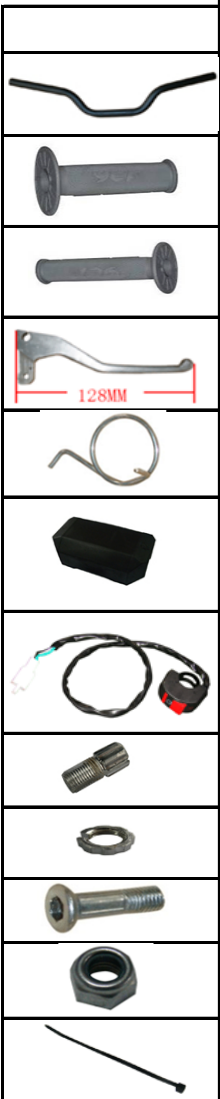
	MOTOR-50E	Motor XYD-14D 48V 1200W 2800rpm	Moteur 48V 1200W 2800rpm	1	50E16/
	GB70.2-M8×20	screw M8×20	vis M8×20	3	50E16/
	GB93-Φ8-W	Standard spring washer φ8	rondelle φ8	3	50E16/
	GB97-Φ8-W	flat washer φ8	rondelle φ8	3	50E16/
	RS35/10T	Sprocket(10T) 50E	PSB 10T	1	50E16/
	GB70-M5×16	Hex. Bolt M5×16	vis M5×16	1	50E16/
	GB96-Φ5-W	flat washer Φ5×Φ15	rondelle Φ5×Φ15	1	50E16/
	YC50-20-97	Sprocket cover	Protection PSB	1	50A13-16
	GB5787-M5×20-W	Hex. Bolt with Flanged Face M5X20	vis M5X20	3	50A13-16

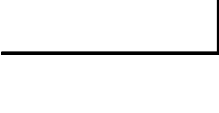
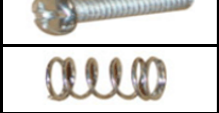
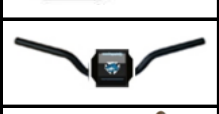
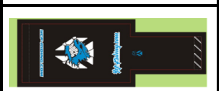
CARTONS - CAISSES MOTOS

	YC110-CARTON-50	BIKE BOX 50 YCF 1280×380×840mm	CARTON EMBALLAGE MOTO 50	1	50A12-16
--	-----------------	--------------------------------	--------------------------	---	----------

	YC110-FOAMBOX	Foam box 2014 420×340×160mm	Cale PS	1	ALL BKIES2014-16
	YC110-FILM	Protective film for seat 600×600×0.02mm	Protection plastique Selle	1	ALL BKIES2014-16
CATALOGUES - FICHES MOTOS - FICHES STICKER					
	YC110-0700-01	Accessory tools	Trousse a outils	1	ALL BIKES
	YC110-0700-0203	Owner manual 50E 2016	Manuel Utilisation 50E 2016	1	50E16/
	YC110-0700-0401	Vin Plate 2015	Plaque Vin 2015	1	ALL BIKES2013-16
	YC110-0700-03	A4 sheet assy	Fiche A4	1	ALL BIKES

2016

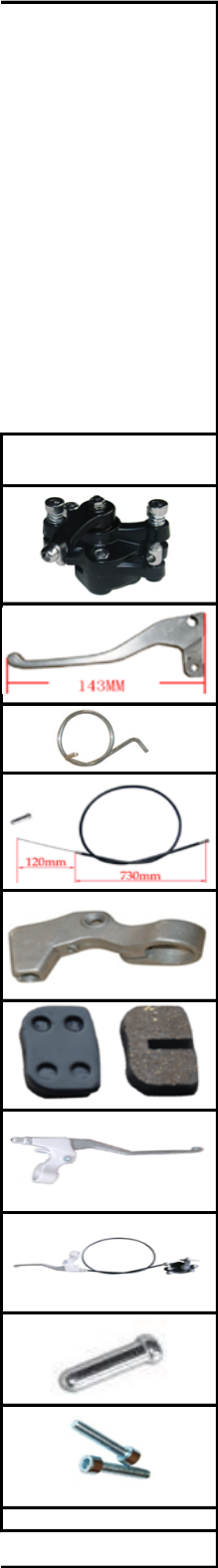


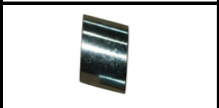
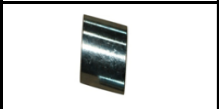




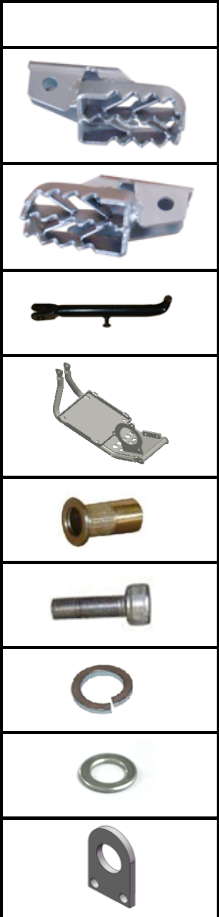
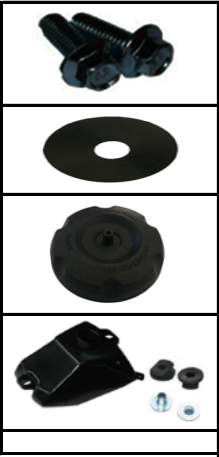






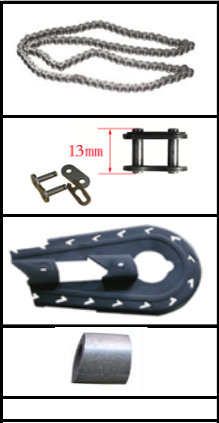


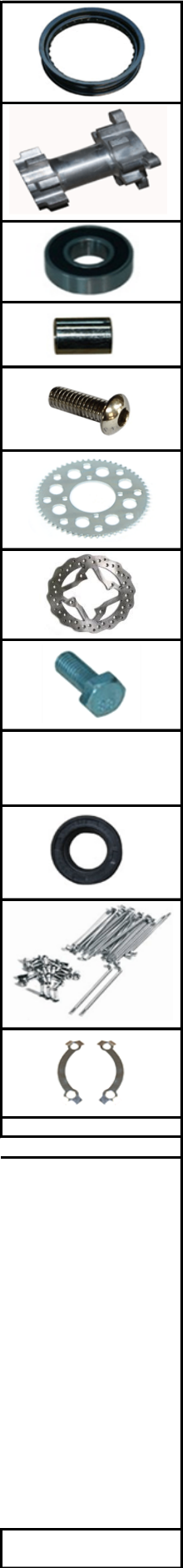


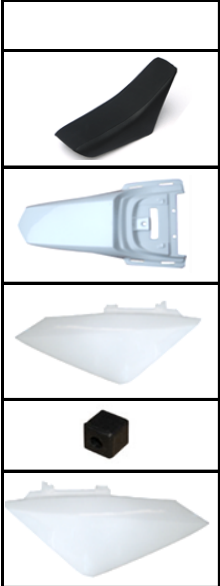
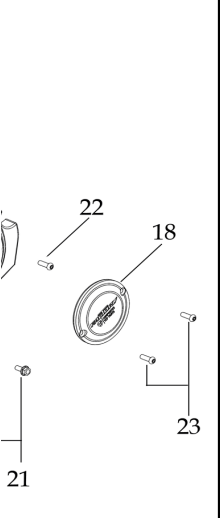




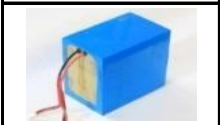


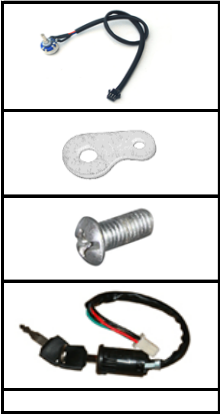


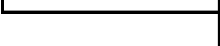
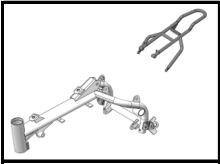












DRIVE CHAIN - CHAÎNE

Always consult the owner's manual for the correct maintenance procedures. Always use the correct maintenance procedures. Always use the correct maintenance procedures. Always use the correct maintenance procedures.

YCF-FRANCE
SENTEFE PRATS

TIRE INFORMATION - PNEUS

READ THE PRESSURE RANGE ON THE TIRE. READ OWNER'S MANUAL FOR THE
MAXIMUM WEIGHT CAPACITY AND THE USE OF
THE TIRE. DO NOT EXCEED THE WEIGHT RANGE.

PRESSION PNEUS A FROID AVANT 2 BAR - ARRERE, 2.2 BAR
POUR UN CHARGE MAXIMUM PERMIS
VALLEE PNEUS AVANT 80/100/14 - ARRIERE 80/100/14

WARNING - IMPORTANT

BEFORE OPERATING THIS VEHICLE, YOU MUST
CHECK THE ENGINE OIL LEVEL.
AVANT DE DEMARRER LE VEHICULE, VERIFIER LE
NIVEAU D'HUILE MOTEUR.

50E 専用

WARNING - IMPORTANT

READ THE PRESSURE RANGE ON THE TIRE. READ OWNER'S MANUAL FOR THE
MAXIMUM WEIGHT CAPACITY AND THE USE OF
THE TIRE. DO NOT EXCEED THE WEIGHT RANGE.

PRESSION PNEUS A FROID AVANT 2 BAR - ARRERE, 2.2 BAR
POUR UN CHARGE MAXIMUM PERMIS
VALLEE PNEUS AVANT 80/100/14 - ARRIERE 80/100/14



**NE PAS OUBLIER DE FAIRE LES RESERVES
D'UNES ALPHES DE TRANSPORTEUR A
RECEPTION DES COLIS SUR LE BON DE
LIVRAISON.**

**PLEASE CHECK THE CONDITION OF CRATE
AT RECEIPT OF GOODS.
ANY DAMAGE SHOULD BE NOTED ON THE
CONNOTE WITH THE FREIGHT CARRIER.**

WARNING - AVERTISSEMENT

WARNING:
THE SHOCK ASSEMBLY IS NOT LOCKED!

ATTENTION:
LA VIS DE L'AMORTISSEUR N'EST PAS SERREE



